

**ADDENDUM NO. 2**

**CITY OF GATESVILLE**

**CID 01-STILLHOUSE BRANCH WASTEWATER TREATMENT FACILITY  
IMPROVEMENTS**

**PROJECT NO.: 2-01590 | TWDB CWSRF NO. 73776**

**DATE OF ADDENDUM: JUNE 1, 2023**

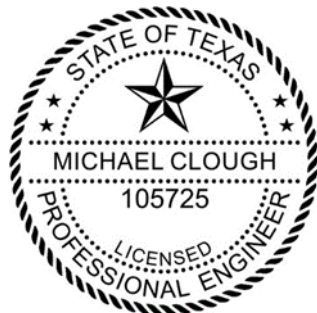
**BID OPENING DATE: JUNE 20, 2023**

---

This Addendum forms a part of Contract and clarifies, corrects or modifies original Proposal Documents, dated May 24, 2023. Acknowledge receipt of this addendum in space provided on Proposal Form. Failure to do so may subject bidder to disqualification.

**MODIFICATIONS TO PROPOSAL DOCUMENTS**

- 1) Drawings
  - a. Sheet C-04  
REVISE to include existing line size.
  - b. Sheet C-08  
DELETE blank revision notation.
  - c. Sheets M-04 and M-05  
REVISE valve schedule to include specification references.



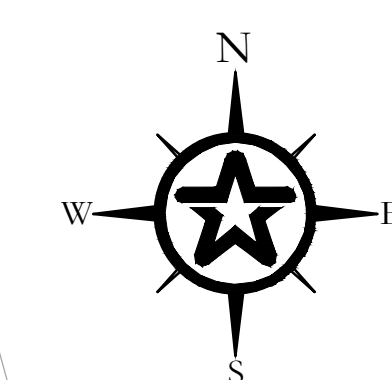
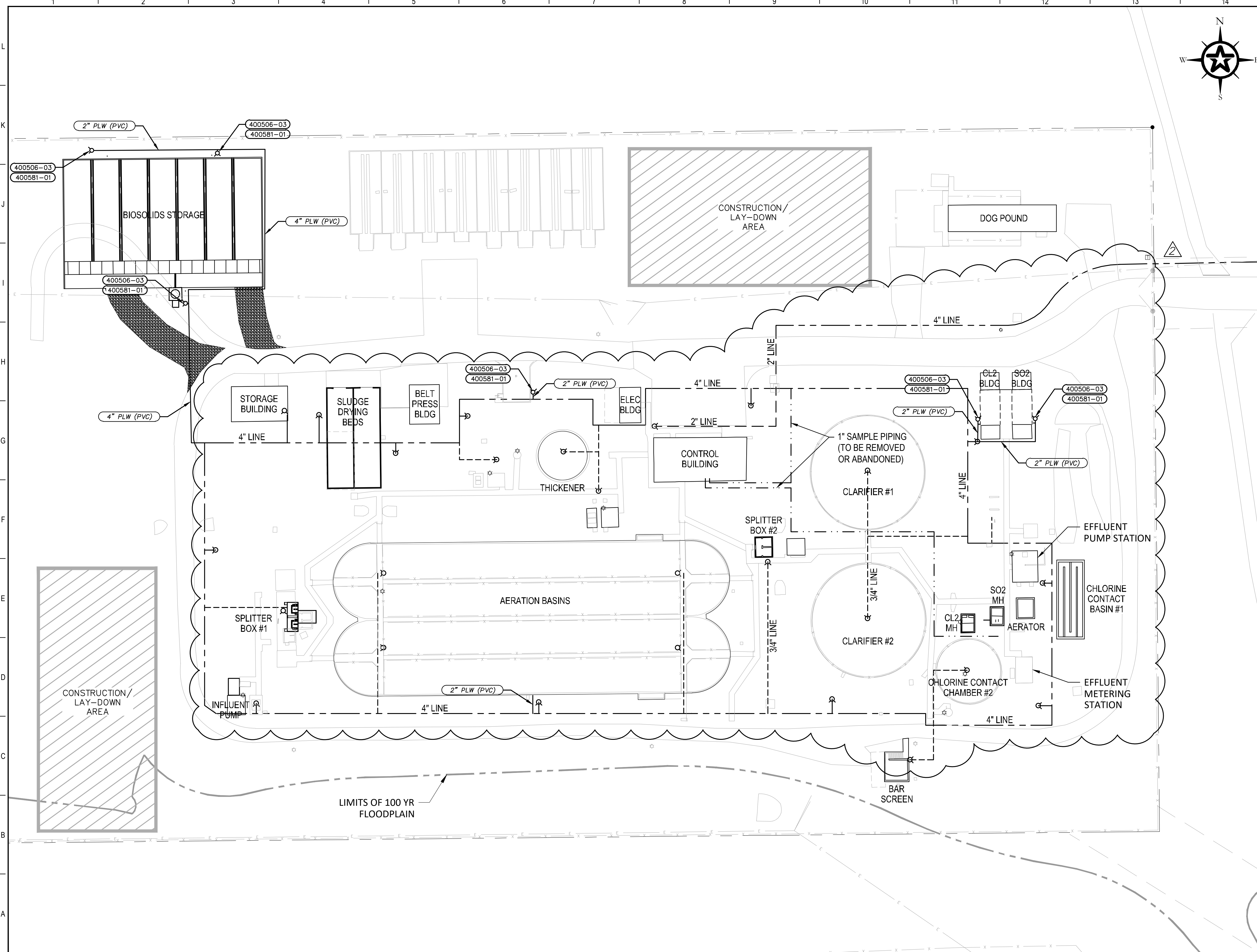
Approved by:

A handwritten signature in blue ink, appearing to read "Michael Clough".

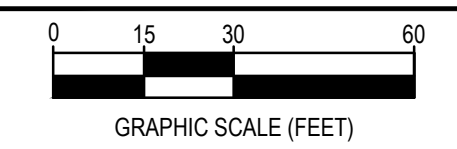
---

Engineer

G:\PROJECTS\2-01590\2 DESIGN\2.0 CAD\WWTFC-PLANT WATER.DWG, C-04, 6/1/2023 8:13:03 AM, panderson



LEGEND	
	PROPOSED PROCESS PIPING
	EXISTING 1" SMALL DIAMETER SAMPLE LINES
	EXISTING 3/4" SMALL DIAMETER WATER LINES
	EXISTING 2" SMALL DIAMETER WATER LINES
	EXISTING 4" SMALL DIAMETER WATER LINES
	LIGHT POLE
	HOSE BIBB
	POWER POLE
	PROPOSED HOSE VALVE
	CONTRACTOR LAYDOWN AREA



REV.	DESCRIPTION	DATE
2	ADDENDUM #2	6-1-23
1	ADDENDUM #1	5-23-23



CITY OF GATESVILLE

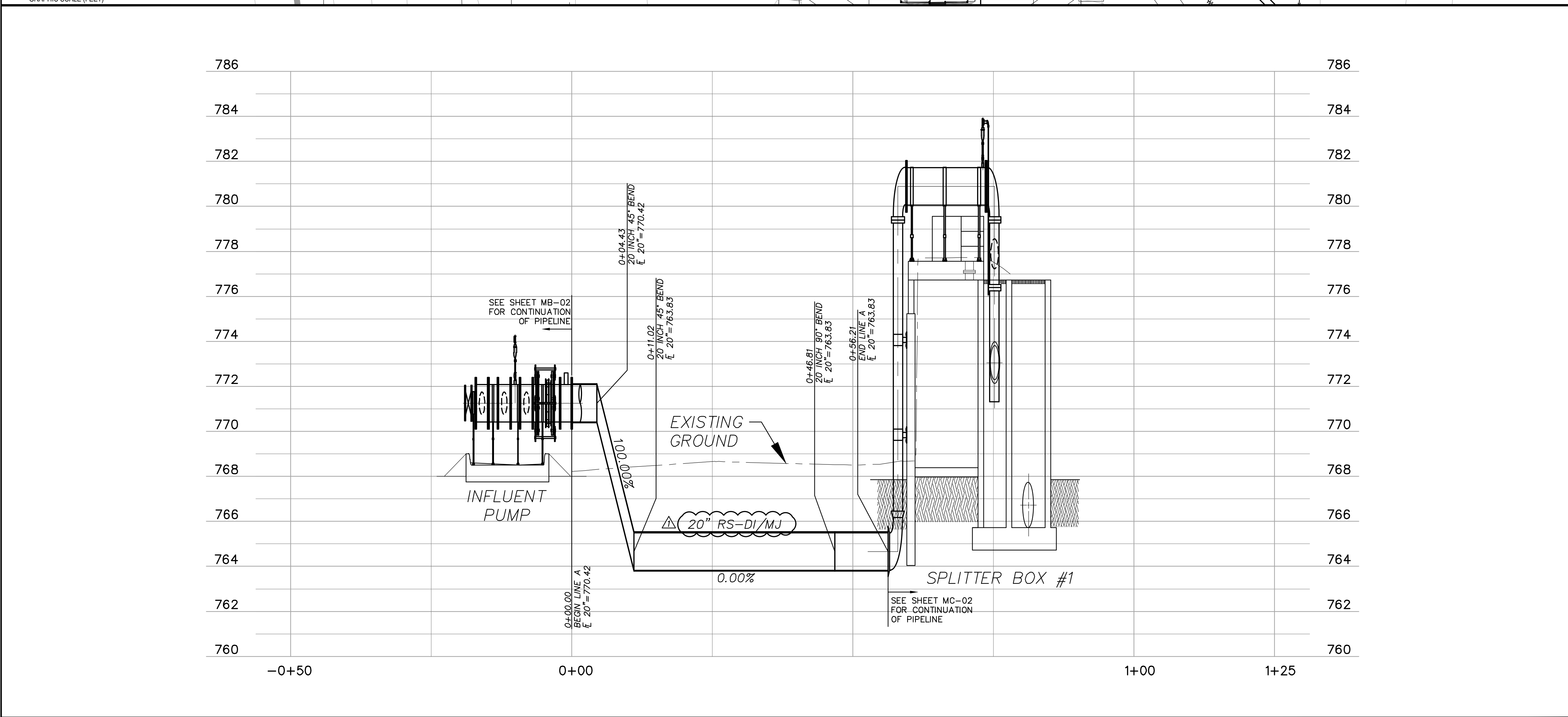
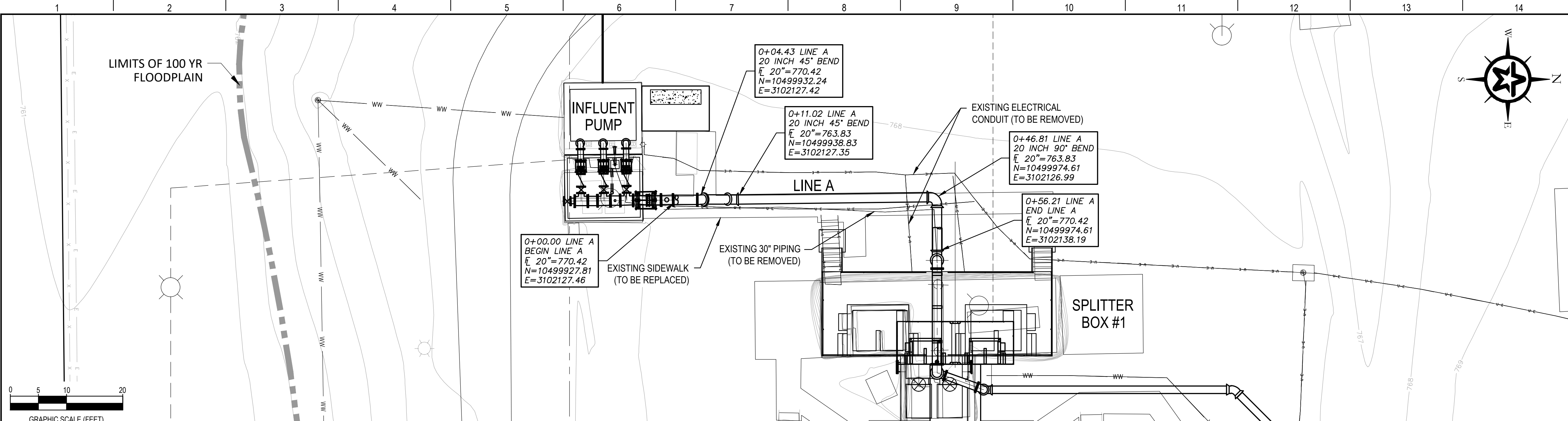
CITY OF GATESVILLE - STILLHOUSE WWTF UPGRADE AND EXPANSION

PLANT WATER PIPING PLAN

5-8-23	DATE	MICHAEL CLOUGH
PM	DESIGNED	J. JENKINS
	DESIGNED	M. CLOUGH
	DRAFTED	TFG, PA
	CHECKED	J. JENKINS
	PROJECT NO.	2-01590
	DRAWING NO.	C-04







REV.	DESCRIPTION	DATE
2	ADDENDUM #2	6-1-23
1	ADDENDUM #1	5-23-23



CITY OF GATESVILLE  
CITY OF GATESVILLE - STILLHOUSE WWTF UPGRADE AND EXPANSION

YARD PIPING PROFILES - LINE A

5-8-23  
DATE

MICHAEL CLOUGH  
MICHAEL CLOUGH  
PROFESSIONAL ENGINEER  
105725

PM J. JENKINS  
DESIGNED M. CLOUGH  
DRAFTED TFG, PA  
CHECKED J. JENKINS  
PROJECT NO. 2-01590

DRAWING NO. C-08

\\LUCID\PROJECTS\PROJECTS\2-01590\2 DESIGN\2.0 CAD\WWT\PC-PPING.DWG, C-08, 6/1/2023 8:12:51 AM, panderson

**A1** 20" INFLUENT PUMP TO DRUM SCREEN (LINE "A")  
H:1"=10'  
V:1"=1'



# VALVE SCHEDULE 1

Key Note No.	Tag No.	Valve Type	Size (inches)	Inlet Pressure (psig)	Outlet Pressure (psig)	Valve Rated (psig)	Flow (gpm)	Fluid	Location	Sheets	Specification Section	Remarks
	CK-201-01	Check Valve	12	20	20	150	0-3000	Screened Sewage	Influent Pump discharge header	MB-02, MB-03, P-01	40 05 65, 2.5 (A)	
	CK-201-02	Check Valve	12	20	20	150	0-3000	Screened Sewage	Influent Pump discharge header	MB-02, MB-03, P-01	40 05 65, 2.5 (A)	
	CK-201-03	Check Valve	12	20	20	150	0-3000	Screened Sewage	Influent Pump discharge header	MB-02, MB-03, P-01	40 05 65, 2.5 (A)	
	PV-201-01	Plug Valve	12	20	20	150	0-3000	Screened Sewage	Influent Pump discharge header	MB-02, MB-03, P-01	40 05 62, 2.1 (B)	
	PV-201-02	Plug Valve	12	20	20	150	0-3000	Screened Sewage	Influent Pump discharge header	MB-02, MB-03, P-01	40 05 62, 2.1 (B)	
	PV-201-03	Plug Valve	12	20	20	150	0-3000	Screened Sewage	Influent Pump discharge header	MB-02, MB-03, P-01	40 05 62, 2.1 (B)	
	ARV-201	Combination Air Vacuum Valve	2	20	20	150	0-9000	Screened Sewage	Influent Pump discharge header	MB-02, MB-03, P-01	40 05 78, 2.2 (A)	
	ARV-210	Combination Air Vacuum Valve	2	20	20	150	0-9000	Screened Sewage	Influent Pump discharge header	MB-02, MB-03, P-01	40 05 78, 2.2 (A)	
	PV-201-04	Plug Valve	12	20	20	150	0-3000	Screened Sewage	Influent Pump discharge header	MB-02, MB-03, P-01	40 05 62, 2.1 (B)	
	BFV-401	Butterfly Valve	10	10	10	150	1,535 CFM	Air	Aeration Basin #1 Air Supply	MD-02, MD-03, P-02	40 05 64, 2.2 (G)	Modulating Actuator
	BFV-402	Butterfly Valve	10	10	10	150	1,535 CFM	Air	Aeration Basin #2 Air Supply	MD-02, MD-03, P-02	40 05 64, 2.2 (G)	Modulating Actuator
	BFV-410-01	Butterfly Valve	8	10	10	150	1,535 CFM	Air	Blower B-410-01 Isolation	MD-02, MD-03, P-02	40 05 64, 2.2 (G)	
	BFV-410-02	Butterfly Valve	8	10	10	150	1,535 CFM	Air	Blower B-410-02 Isolation	MD-02, MD-03, P-02	40 05 64, 2.2 (G)	
	BFV-410-03	Butterfly Valve	8	10	10	150	1,535 CFM	Air	Blower B-410-03 Isolation	MD-02, MD-03, P-02	40 05 64, 2.2 (G)	Alternate Bid Item
	BFV-621-02	Butterfly Valve	30	20	20	150	0-9000	Plant Effluent	SO2 MH Discharge	C-16, P-04	40 05 64, 2.2 (A)	Relocate Existing Valve
	CK-701-01	Check Valve	12	20	20	150	0-3000	Plant Effluent	Effluent Pump Station	MG-02, P-04	40 05 65, 2.5 (A)	
	CK-701-02	Check Valve	12	20	20	150	0-3000	Plant Effluent	Effluent Pump Station	MG-02, P-04	40 05 65, 2.5 (A)	
	CK-701-03	Check Valve	12	20	20	150	0-3000	Plant Effluent	Effluent Pump Station	MG-02, P-04	40 05 65, 2.5 (A)	
	GV-701-01	Gate Valve	12	20	20	150	0-3000	Plant Effluent	Effluent Pump Station	MG-02, P-04	40 05 61, 2.1 (A)	
	GV-701-02	Gate Valve	12	20	20	150	0-3000	Plant Effluent	Effluent Pump Station	MG-02, P-04	40 05 61, 2.1 (A)	
	GV-701-03	Gate Valve	12	20	20	150	0-3000	Plant Effluent	Effluent Pump Station	MG-02, P-04	40 05 61, 2.1 (A)	
	ARV-701-01	Combination Air Vacuum Valve	2	20	20	150	0-3000	Plant Effluent	Effluent Pump Station	MG-02, P-04	40 05 78, 2.2 (A)	
	ARV-701-02	Combination Air Vacuum Valve	2	20	20	150	0-3000	Plant Effluent	Effluent Pump Station	MG-02, P-04	40 05 78, 2.2 (A)	
	ARV-701-03	Combination Air Vacuum Valve	2	20	20	150	0-3000	Plant Effluent	Effluent Pump Station	MG-02, P-04	40 05 78, 2.2 (A)	
	BFV-801	Butterfly Valve	3	20	20	150	70 CFM	Air	Reaeration Basin Air Supply	C-19, P-04	40 05 64, 2.2 (G)	
	CK-901-01	Check Valve	12	20	20	150	0-1200	RAS	RAS Pump Station	MI-04, P-05	40 05 65, 2.5 (A)	
	CK-901-02	Check Valve	12	20	20	150	0-1200	RAS	RAS Pump Station	MI-04, P-05	40 05 65, 2.5 (A)	
	CK-901-03	Check Valve	12	20	20	150	0-1200	RAS	RAS Pump Station	MI-04, P-05	40 05 65, 2.5 (A)	

**NOTES:**

- Schedule only contains valves 4 inches in diameter and larger and specialty valves.
- Schedule only contains new valves or relocated existing valves required for this project.
- See specifications for all valve requirements and for information on valves less than 4 inch in diameter.
- All valves shall have minimum design working pressure rating of 200 psi and flanged valves shall have ANSI Class 125 Flanged ends.
- Operating pressures for smaller valves can be determined from pressures on piping schedule.
- All valves associated with building plumbing are in separate specifications and in the ME series drawings.
- For valves noted as to be vendor supplied are listed for informational purposes, these valves may be inclusive of all valves supplied by equipment manufacturers and should be updated upon completion of project.

ADDENDUM #2	6-1-23
ADDENDUM #1	5-23-23
REV. DESCRIPTION	DATE



**CITY OF GATESVILLE**  
CITY OF GATESVILLE - STILLHOUSE WWTF UPGRADE AND EXPANSION

**VALVE SCHEDULE 1**

5-8-23	DATE	MICHAEL CLOUGH
	DESIGNED	J. JENKINS
	DRAFTED	M. CLOUGH
	CHECKED	TFG, PA
	PROJECT NO.	J. JENKINS
		2-01590
DRAWING NO.		<b>M-04</b>

G:\PROJECTS\2-01590\2 DESIGN\2.0 CAD\WTPM-SCHEDULE.DWG, VALVE SCHEDULE, 6/1/2023 8:13:13 AM, panderson



# VALVE SCHEDULE 1

Key Note No.	Tag No.	Valve Type	Size (inches)	Inlet Pressure (psig)	Outlet Pressure (psig)	Valve Rated (psig)	Flow (gpm)	Fluid	Location	Sheets	Specification Section	Remarks
	PV-901-01	Plug Valve	12	20	20	150	0-1200	RAS	RAS Pump Station	MI-04, P-05	40 05 62, 2.1 (B)	
	PV-901-02	Plug Valve	12	20	20	150	0-1200	RAS	RAS Pump Station	MI-04, P-05	40 05 62, 2.1 (B)	
	PV-901-03	Plug Valve	12	20	20	150	0-1200	RAS	RAS Pump Station	MI-04, P-05	40 05 62, 2.1 (B)	
	PV-901-04	Plug Valve	12	20	20	150	0-1200	RAS	RAS Pump Station	MI-04, P-05	40 05 62, 2.1 (B)	
	PV-910	Plug Valve	8	20	20	150	0-800	WAS	RAS Pump Station	P-05, MI-04	40 05 62, 2.1 (B)	
	PV-911	Plug Valve	8	20	20	150	0-3000	WAS	Valve Vault #2	P-05, MZ-07	40 05 62, 2.1 (B)	Replace Existing Valve
	ARV-940	Combination Air Vacuum Valve	2	20	20	150	0-9000	RAS	Splitter Box #1	MC-02, P-01	40 05 78, 2.2 (A)	
	PV-940	Plug Valve	16	20	20	150	0-3000	RAS	Splitter Box #1	MC-02, P-01	40 05 62, 2.1 (C)	

**NOTES:**

- Schedule only contains valves 4 inches in diameter and larger and specialty valves.
- Schedule only contains new valves or relocated existing valves required for this project.
- See specifications for all valve requirements and for information on valves less than 4 inch in diameter.
- All valves shall have minimum design working pressure rating of 200 psi and flanged valves shall have ANSI Class 125 Flanged ends.
- Operating pressures for smaller valves can be determined from pressures on piping schedule.
- All valves associated with building plumbing are in separate specifications and in the ME series drawings.
- For valves noted as to be vendor supplied are listed for informational purposes, these valves may be inclusive of all valves supplied by equipment manufacturers and should be updated upon completion of project.

ADDENDUM #2	6-1-23	
ADDENDUM #1	5-23-23	
REV.	DESCRIPTION	DATE



**CITY OF GATESVILLE**  
CITY OF GATESVILLE - STILLHOUSE WWTF UPGRADE AND EXPANSION

**VALVE SCHEDULE 2**

5-8-23  
DATE

MICHAEL CLOUGH

DESIGNED	J. JENKINS
DRAFTED	M. CLOUGH
CHECKED	TFG, PA
PROJECT NO.	J. JENKINS
	2-01590

**DRAWING NO. M-05**



G:\PROJECTS\2-01590\2 DESIGN\2.0 CAD\WTPM-SCHEDULE.DWG, VALVE SCHEDULE 2, 6/1/2023 8:13:15 AM, panderson